

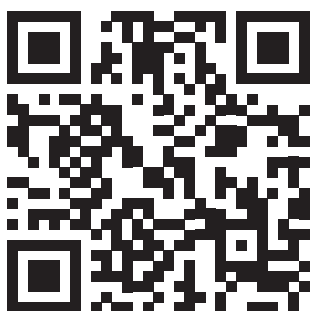
COLD APPETIZERS

| | | |
|------------|---|-----|
| | Smashed cucumbers | 450 |
| | Tomato kimchi | 480 |
| | Guacomole with roti paratha | 750 |
| | Seaweed salad | 480 |
| | Edamame with salt | 450 |
| | Edamame with chili | 450 |
| | Green salad with shrimp tempura and corn mayo | 790 |
| hit | Salmon with shiso sauce | 990 |
| hit | Taco with salmon, snow crab and mango sauce | 820 |
| new | Beef tartare | 850 |

お
や
つ

HOT APPETIZERS

MENU WITH PHOTO



| | | |
|------------|---|-----|
| | Warm salad with ahi panka chicken | 790 |
| hit | Thai chicken with yogurt | 720 |
| hit | Crispy eggplants with tomatoes | 590 |
| | Shrimps tempura | 950 |
| hit | Asian flatbread with shrimp and avocado | 850 |
| | Asian flatbread with eel | 850 |
| new | Asian flatbread with salmon | 890 |
| | Dumplings in shrimp bisque | 650 |
| | Sweet potato fries | 520 |
| | French fries | 450 |

EIWA ROLLS

mini / full

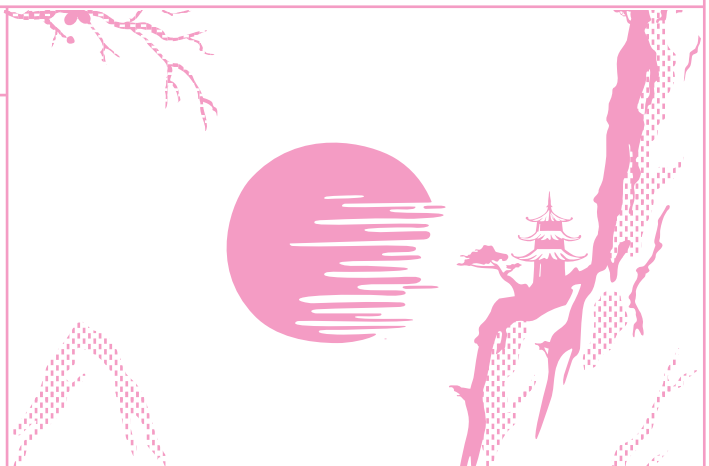
| | | |
|--------|---|----------|
| | Baked eel with sweet pepper and Japanese mayo | 950 |
| | Salmon, shrimp tempura with Japanese mayo | 820 |
| 🌶️ | Baked wasabi shrimp with unagi tonka | 850 |
| | Philadelphia in cucumber with spicy sauce | 890 |
| 🌶️ | Crab, salmon, jalapeno sauce with potato pie | 1250 |
| | Eel tartare with oyster mushrooms and Japanese mayo | 650/1150 |
| 🌶️ hit | Creamy tuna with bonito and spicy sauce | 480/890 |
| | Salmon tartare with potato pie and cilantro sauce | 650/1150 |
| hit | Seared salmon with orange and crab | 650/1150 |
| | Tonka eel with tempura shrimp and yuzu apple | 650/1150 |
| | Salmon and tuna tartare with truffle mayo and bonito | 650/1150 |
| hit | Baked salmon with mozzarella and bonito cheese | 850 |
| | Salmon, tuna, crab in cucumber with wasabi sauce and lemongrass | 950 |
| | Seared beef tataki with truffle unagi | 950 |
| | Seared eel with creamy caramel and tomago | 950 |
| | Chicken tempura with cheese sauce | 690 |

SETS

| | | |
|--|--|------|
| | Hotto set California with crab tempura, teriyaki salmon tempura, mini baked salmon, mini baked eel | 2150 |
| | Kurashiku set cucumber maki, mini Philadelphia with salmon, mini Philadelphia with eel, mini California with crab, mini teriyaki salmon | 2680 |












POKE

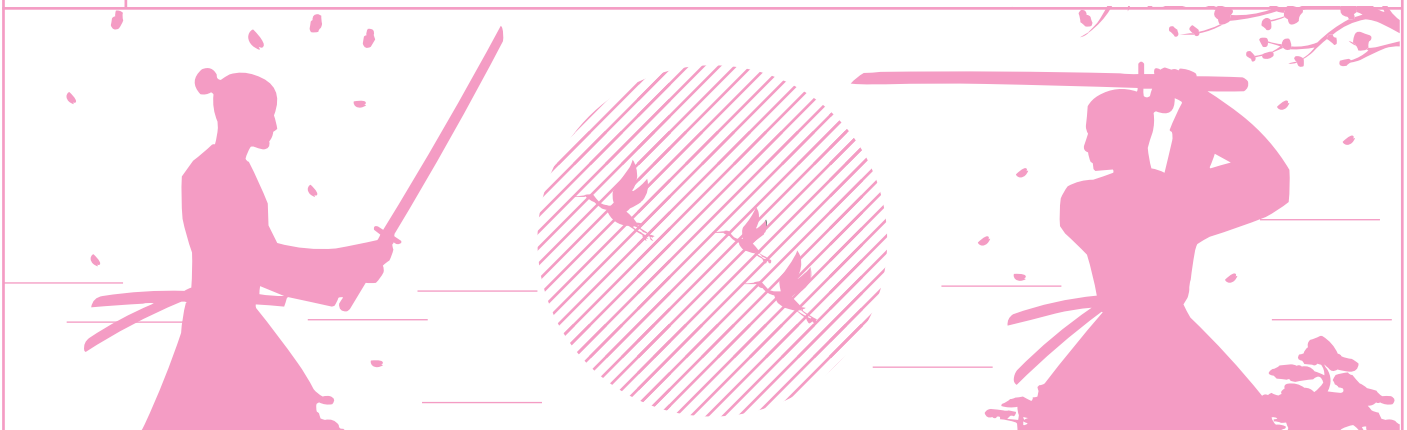
| | | |
|-----|-------------------|-----|
| ✓ | Poke with tofu | 620 |
| hit | Poke with shrimps | 750 |
| hit | Poke with salmon | 950 |
| | Poke with eel | 850 |
| | Poke with tuna | 890 |



CLASSIC ROLLS

mini / full

| | | |
|---|---------------------------------|---------|
|   | Maki with cucumber | 350 |
|   | Maki with avocado | 350 |
|  | Maki with cream cheese | 350 |
|  | Maki with salmon | 550 |
|  | Maki with tuna | 550 |
|  | Maki with eel | 550 |
|  | Maki with shrimp | 550 |
| hit | California with crab in tempura | 890 |
| | California with salmon | 520/950 |
| hit | California with crab | 520/950 |
| hit  | Philadelphia with salmon | 550/990 |
|  | Philadelphia with eel | 550/990 |
| | Canada | 550/990 |



| | GUNKANS | SASHIMI | SUSHI |
|--------|---------|---------|-------|
| Eel | 320 | 990 | 350 |
| Salmon | 320 | 990 | 350 |
| Tuna | 320 | 1190 | 390 |

SOUPS

| | | |
|-----|----------------------------------|-----|
| hit | Miso with chanterelles and tofu | 590 |
| | Ramen with chicken | 720 |
| hit | Cheesy soup with shrimps tempura | 850 |
| | Tom yam with shrimp and squid | 890 |
| new | Truffle ramen with tataki beef | 850 |
| | Chicken Katsu Soup | 620 |

NOODLES

| | | |
|-----|---|-----|
| hit | Beef in creamy bean sauce | 790 |
| | Chicken in Thai BBQ | 790 |
| hit | Mac'n'Cheese with sel | 890 |
| | Beef tenderloin in black bean sauce | 890 |
| | Squid and shrimp with seaweed sauce | 890 |
| | Glass noodles with shrimp and coconut ponzu | 920 |



温かい料理

HOT DISHES

| | | |
|-----|--|-----|
| hit | Rice with shrimps and squid with shrimp bisque sauce | 790 |
| hit | Fried rice with duck confit | 850 |

DESSERTS

| | | |
|-----|--|-----|
| hit | Mango-passion fruit mochi | 390 |
| | Strawberry-basil mochi | 390 |
| hit | Cheesecake with raspberry coulis and yogurt | 550 |
| | Burnt chocolate | 550 |
| | Banana pie with coconut matcha | 650 |
| | Assorted Sorbets/Gelato (banana, prosecco, green tea, coconut, chocolate, raspberry, strawberry, ginger, mango) | 420 |



COFFEE

| | |
|------------------|-----|
| Espresso | 220 |
| Doppio | 250 |
| Americano | 290 |
| Cappuccino | 350 |
| Flat White | 380 |
| Latte | 380 |
| Matcha Latte | 450 |
| Raf | 450 |
| Alternative Milk | 100 |

CLASSICAL TEA

500 ml

| | |
|------------|-----|
| Assam | 420 |
| Earl Grey | 420 |
| Sencha | 420 |
| Herbal Tea | 420 |

PREMIUM CHINESE TEA

500 ml

| | |
|--------------|-----|
| Ginseng | 550 |
| Puer Shu | 550 |
| Nai Xiang | 550 |
| Ku-chiau | 550 |
| Da Hong Pao | 550 |
| Tie Guan Yin | 550 |



Siphon is a device for brewing tea using the geyser method. The special brewing conditions allow the tea leaf to brew better and maximize the aroma, nutrients and flavor.

TEA IN SIPHON

500 ml

| | |
|---|-----|
| Oolong, Sakura, Peach, Almond, Rose | 750 |
| Assam, Orange, Apricot, Bergamot, Lotus | 750 |
| Assam, Strawberries, Rhubarb, Anchan | 750 |
| Sencha, Almond, Chamomile, Mint | 750 |
| Sencha, Apricot, Ppassion fruit, Rose | 750 |



SOFT DRINKS

| | |
|--|---------|
| Juice 200 ml orange, cherry, apple, tomato | 250 |
| Fresh 250 ml orange, grapefruit, carrot, celery, apple | 450 |
| Coca-Cola/Coca-Cola Zero/Fanta/Sprite/Tonic | 390 |
| Red Bull Classic / Sugar Free | 390 |
| Sangaria (asian lemonade) | 450 |
| Water Shambala 285/585 ml | 350/650 |

FRUIT TEA

500 ml

| | |
|-----------------------------|-----|
| Sea buckthorn-passion fruit | 590 |
| Mango-basil | 590 |
| Jasmine-pear | 590 |
| Cherry-rosemary | 590 |
| Ginger-lemongrass | 590 |
| Raspberry-cones | 590 |
| Apple and feijoa | 590 |

飲み物

LEMONADES

300/1000ml

| | |
|--|---------|
| Lychee-sorrel | 390/990 |
| Yuzu- cucumber | 390/990 |
| Pineapple- passion fruit | 390/990 |
| Umami | 390/990 |
| Jasmine-Passion Fruit with Juiceballs | 450/- |

SMOOTHIE

350 ml

| | |
|------------------|-----|
| Banana-aloe | 590 |
| Strawberry-basil | 590 |

LASSI

350 ml

| | |
|------------------|-----|
| Mango-coconut | 590 |
| Cherry-mint | 590 |
| Raspberry-almond | 590 |

お茶

SPARKLING WINE



| | |
|--|-----|
| Frettino Brut dry, Italy, Veneto, Trebbiano, Malvasia | 650 |
| Tallero сух., Италия, Венето, DOC, Глера 100% | 750 |



| | |
|---|------|
| Prosecco Bolla dry, Italy, Valdobbiadene, DOCG, Glera 100% | 5200 |
| Prosecco Casa Defra dry, Italy, Veneto, DOC, Glera, Perera | 4900 |
| Szigeti Gruner dry, Austria, Gruner Wetliner | 5200 |
| Bestheim Cremant dry, France, Alsace, Pinot Blanc, Auxerrois | 5900 |
| Champagne Lagache dry, Champagne, Pinot noir, Chardonnay | 9900 |

赤ワイン

RED WINE



| | |
|--|-----|
| Los Boldos dry, Argentina, Merlot | 590 |
| Geografico Chianti dry, Tuscany, Sangiovese, Canaiolo | 590 |
| Lauca dry, Chile, pinot noir | 650 |
| Most Wanted semi-dry, USA, California, Zinfandel | 720 |



| | |
|---|------|
| Marques de abadia dry, Spain, Rioja, Tempranillo, Garnacha | 4500 |
| Lenotti Ripasso semi-dry, Italy, Valpolicella | 4900 |
| Crab & More Zinfandel dry, USA, California, Zinfandel | 5200 |
| Prototipe dry, USA, California, Pinot Noir | 5900 |
| Judiyt Beck dry, Austria, Burgenland, Zweigelt | 7900 |

● ASIAN

ASIAN WINE



| | |
|---|------|
| Changyu semi-dry, / white / China, Riesling | 4200 |
| Changyu Moser XV dry, / white / China, Blanc de Noir, Cabernet Sauvignon | 4900 |
| Changyu Phoenix semi-dry, red / China / Carmeneo | 4200 |



BY THE GLASS / 125 ML

BOTTLED / 750 ML

PLUM WINE

| | |
|-------------------|-------|
| | 80 ml |
| Umenishiki Umeshu | 890 |

SOJU

| | |
|--------------------|--------|
| | 100 ml |
| Jinro Frech Bamboo | 590 |
| Jinro Grapefruit | 590 |
| Jinro Strawberry | 590 |
| Jinro Peach | 590 |
| Jinro Green Grape | 590 |
| Jinro Plum | 590 |

焼酎

AWAMORY

| | |
|---------------------|-------|
| | 40 ml |
| Zuisen Hovato | 590 |
| Kurouma Taru | 890 |
| Umenishiki Ayame 25 | 520 |

BAIJIU

| | |
|-----------------------|-------|
| | 40 ml |
| Luzhou Laojiao Tou Qu | 590 |

DRINKS



SAKE 40 ml

table sake _____

Hakushika Shiboritata 450

special _____

Hakushika Junmai Taruzake 490

Hakushika Snow Beauty Nigori 550

premium _____

Hakushika Ginjo Namahcozo 520

Umenishiki Ginjo Tuuno 550

Shikika Reisui 620

Hakushika Hana-Konaku 650

super premium _____

Gekkeikan Daiginjo Namazume 550

Junmai Daiginjo Kiwami 590

Akita Seishu Dewatsuru Jinmai 690

白ワイン

WHITE WINE

Hiromant 590
semi dry, Portugal, Vinho Verde

Casa Massimo 650
dry, Italy, Veneto, Soave

Pietraforte Terre 650
dry, Italy, Pinot Grigio



Becksteiner Winzer 750
dry, Germany, Riesling

Clear Spring 750
dry, South Africa, Sauvignon Blanc

Jack&Jen 790
dry, Austria, Riesling

UNA 5500
semi-dry, Austria, Riesling

Urban Riesling 5900
semi-dry, Germany, Musel, Riesling



Medusa 5500
dry, Spain, Albariño

Whistling Track, 6500
dry, New Zealand, Sauvignon blanc

Chablis Domaine 8500
dry, France, Burgundy, Chardonnay

ピンクワイン

ROSE WINE



Clear Spring Rose 750
dry, South Africa, Sauvignon blanc

| | |
|---------------|-------|
| COGNAC | 40 ml |
| Hennessy VS | 1050 |
| Courvoiser | 1390 |

| | |
|--------------------|-------|
| WHISKEY | 40 ml |
| Dewars White Label | 520 |
| Kubao | 550 |
| Jim Beam | 590 |
| Jack Daniels | 620 |
| Akashi | 920 |
| Masahiro Pure Malt | 950 |
| Chivas Regal | 1050 |
| Maccalan | 2290 |

| | |
|------------------|-------|
| GIN | 40 ml |
| Masahiro Okinawa | 750 |
| Akori Cherry | 820 |
| Bombay | 920 |
| Roku | 920 |
| Hendrix | 1090 |

| | |
|---------------------|-------|
| RUM | 40 ml |
| Kiyomi | 750 |
| Zacapa 23 | 820 |
| Botucal | 890 |
| Takamaka Blanc | 590 |
| Takamaka Extra Noir | 620 |
| Takamaka Coconut | 520 |

| | |
|--------------------|-------|
| TEQUILA | 40 ml |
| Jose Cuervo Silver | 550 |
| Jose Cuervo Gold | 590 |
| Patron Gold | 990 |
| Patron Silver | 990 |

| | |
|--------------|-------|
| VODKA | 40 ml |
| Beluga | 550 |
| Eiko | 590 |
| Grey Goose | 690 |

AUTHORIAL COCKTAILS

*We can make a cocktail according to your wishes

| | |
|-------------------|-----|
| Akinoumi | 850 |
| Ringo | 850 |
| Dragon's Treasure | 850 |
| Kitsune | 850 |
| Kappa | 850 |
| Basan | 850 |
| Ino | 850 |
| Long | 850 |
| Roc | 850 |

カクテル

CLASSIC COCKTAILS

| | |
|---------------|-----|
| Aperol Spritz | 750 |
| Bellini | 750 |
| Hugo | 750 |
| Pornstar | 750 |
| Margarita | 750 |
| Negroni | 750 |
| Raspberry Fiz | 750 |
| Mai Tai | 750 |
| Whiskey sour | 750 |

| | |
|-------------------|------------|
| DRAFT BEER | 330/500 ml |
| Yichang | 480/650 |
| Stiegl Weisse | 480/650 |

| | |
|---------------------|--------|
| BOTTLED BEER | 330 ml |
| Lucky Budda | 590 |
| Tsingtao | 520 |
| Tsingtao stout | 520 |
| Tsingtao White Bear | 550 |
| Clausthaler | 490 |



JIWA